

# A Colorwork Sampler

By Deborah V. Gardner

This little sampler will help you learn Fair Isle, intarsia, and duplicate stitch.

## Materials

Fingering weight yarn: 3 colors  
1.5 mm needles  
yarn needle

## Notes

- Work garter stitch for the first and last 3 rows and the first and last 2 sts of each row.
- The frame will be worked in duplicate stitch.
- Tips for duplicate stitch are included at the end of the pattern.
- Work the hearts in intarsia and the word “sister” in fair isle.

## Directions:

Cast on 37 sts.

Rows 1 – 3: K

Row 4, 6, and 8: K2, p to 33 sts, k2.

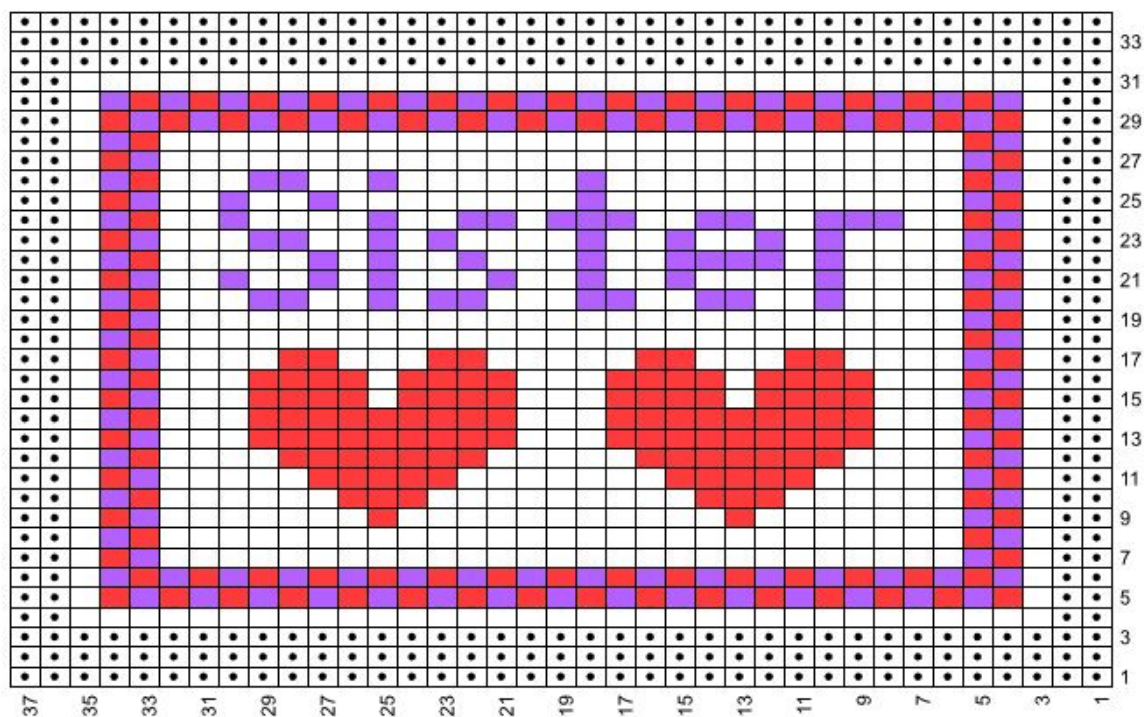
Row 5 and 7: K.

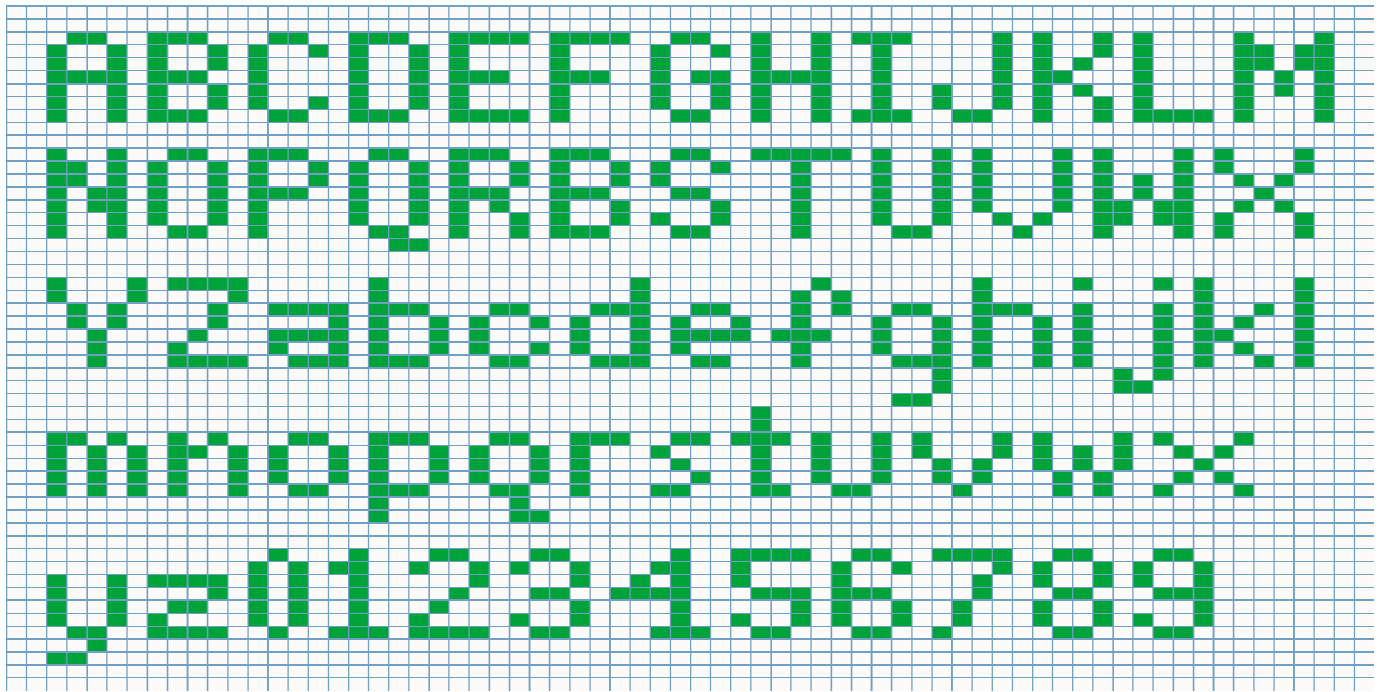
Rows 9 – 31: K the first and last 2 sts. Work the chart (Sister and hearts only) in stockinette stitch.

Rows 32 – 34: K.

Bind off.

Work the frame in duplicate stitch.





#### Tips for Duplicate Stitch

- Always work vertical lines from bottom to top. Alternate the direction every other stitch, i.e. insert the needle under the V from left to right. On the next stitch, insert it from right to left.
- Always work diagonal lines from bottom to top and insert the needle under the V in the direction of the slant.
- When working a horizontal row, insert the needle in the same direction you are working. For example, if working from right to left, insert the needle under the V from right to left.