

Coasters

by Deborah V. Gardner

alphabet charts adapted from *Alphabet Knitting Using Letter Charts* by Creativity Strikes!

You may use any of the coasters for commercial purposes, except for the sports coasters.



Materials

About 20 grams worsted weight yarn (MC). Samples used Cascade 220, 100% Peruvian Highland Wool

Small amount of contrasting color

US size 5 (3.75mm) straight needles or the size to obtain gauge

yarn needle

4" x 4" cork board, preferably with adhesive back (available on Amazon)

Crochet hook, US size 5 (3.75 mm)

Gauge:

23 stitches x 29 rows = 4" in stockinette stitch

Directions

Front of coaster

With MC, cast on 25 sts.

Row 1: P.

Continue working the chart in stockinette stitch changing color as indicated.

Bind off in knit.

Back of coaster

With MC, cast on 25 sts

Knit 31 rows in stockinette stitch beginning with a purl row.

Bind off in knit.

Weave in all ends.

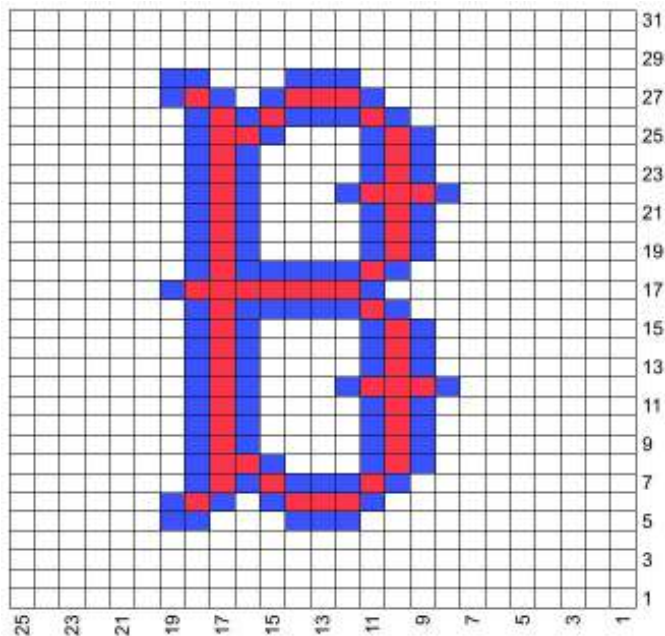
Block.

Crochet the squares together with the cork between them. If the cork has an adhesive backing, be sure to remove the paper and affix to the square with the letter.

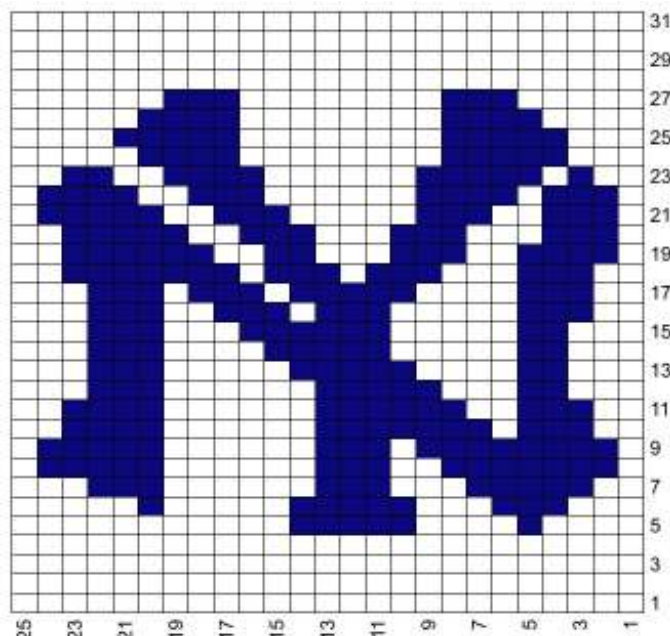
Tips:

- At the top and bottom, crochet a cast-on edge to a bound-off edge. Start at the middle of the coaster top or bottom for a neater finish.
- When crocheting the sides together, skip every 3rd stitch. Remember, knit stitches are shorter than their width. By skipping every 3rd stitch, the coaster will not have wavy edges.
- On page 16, see the directions about how to finish off the crocheted border.
- Tips for working duplicate stitch are on page 16.
- A blank template is provided on page 15 for your own design.

Sports

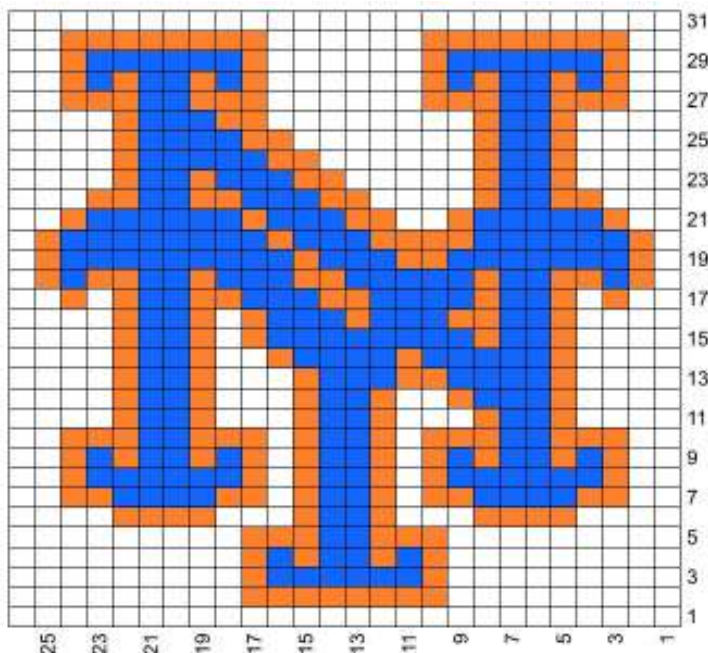


Edge: Blue

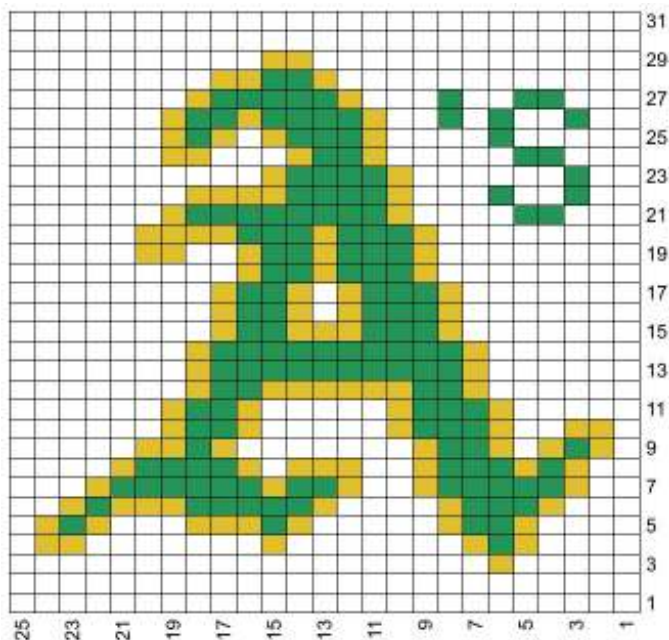


Edge: White

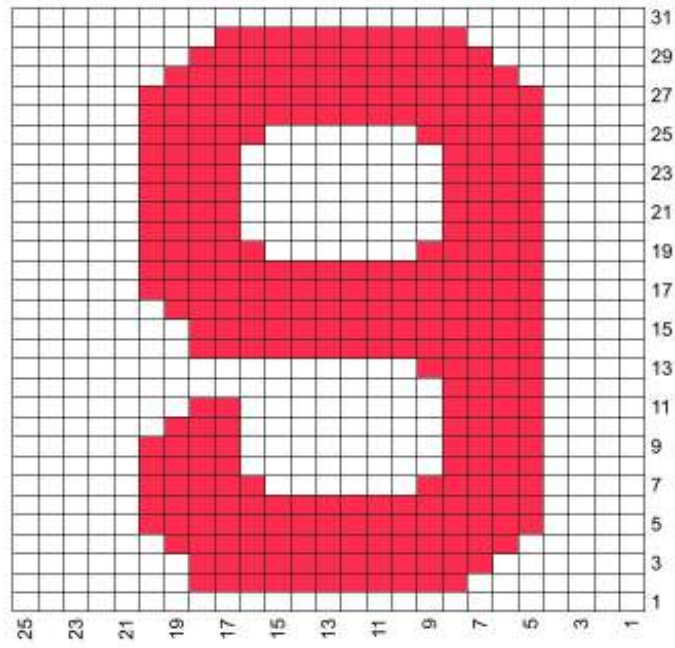
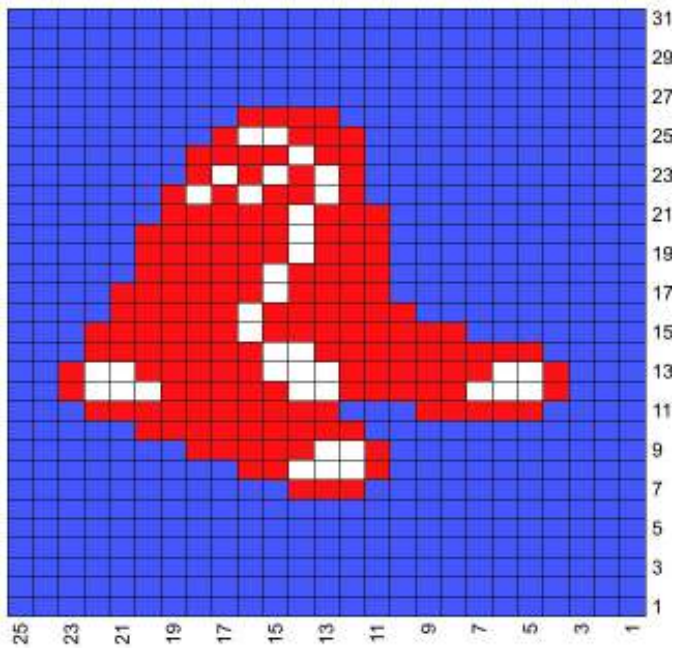
Alternative: Reverse the colors and edge in Navy Blue



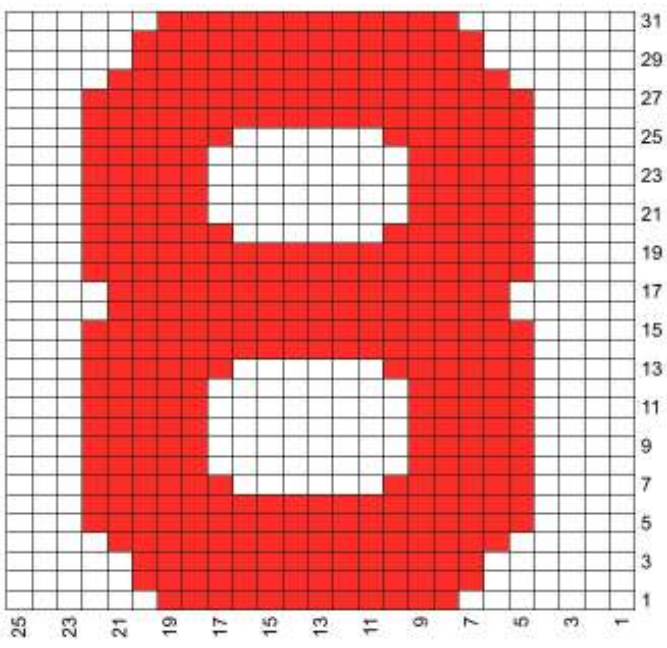
Note that this is 26 stitches wide, not 25.



Outline the apostrophe and S in gold.

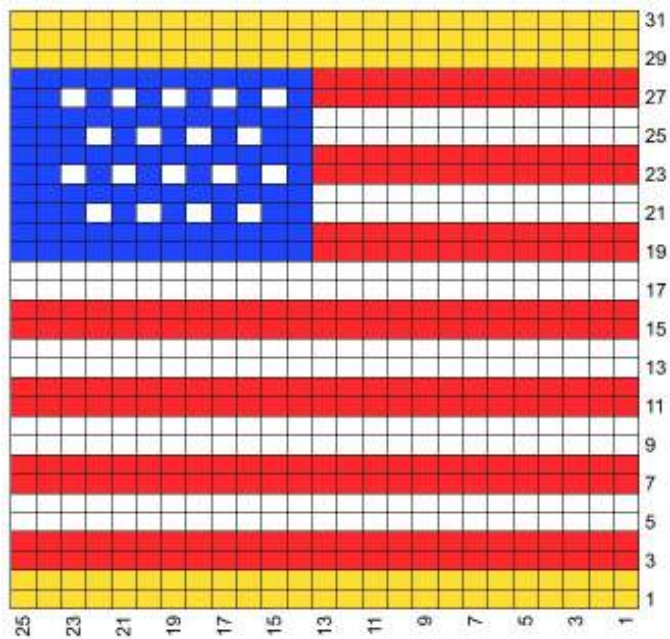


Edge: White

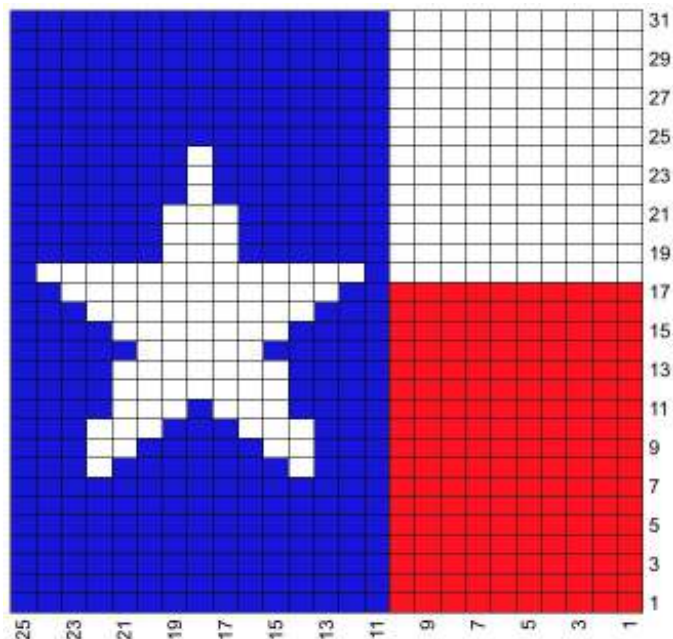


Edge: White

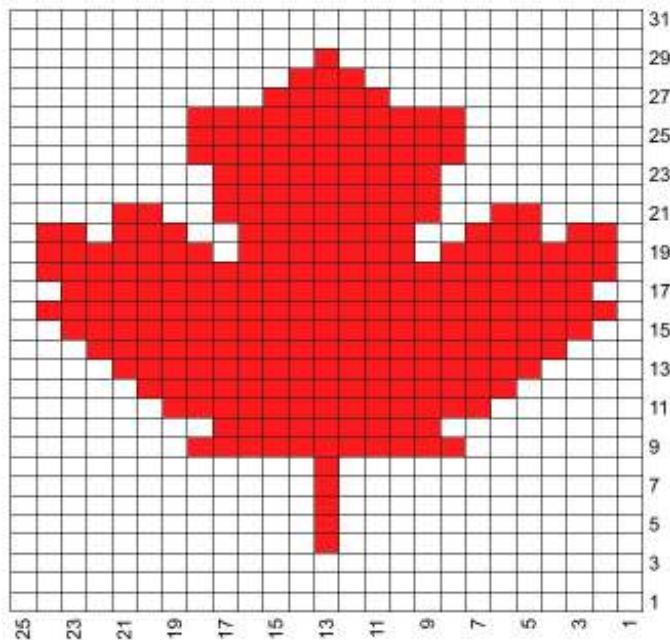
Flags



Edge: Gold

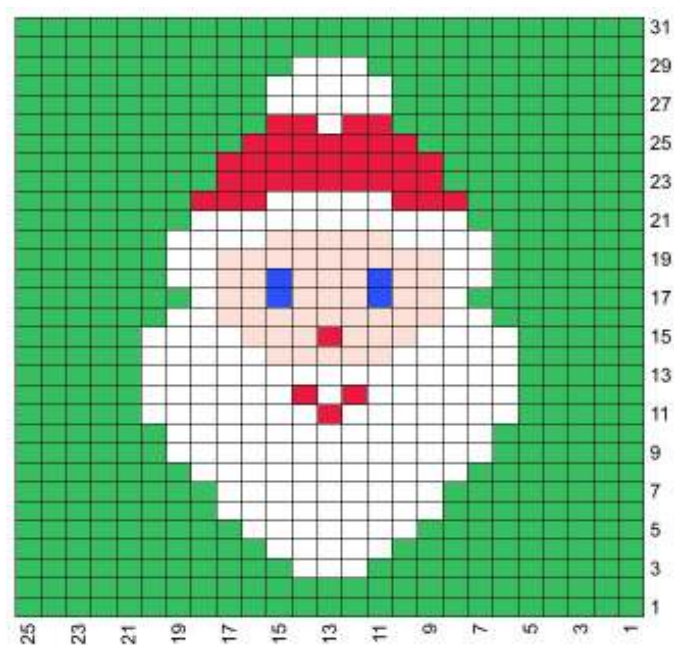
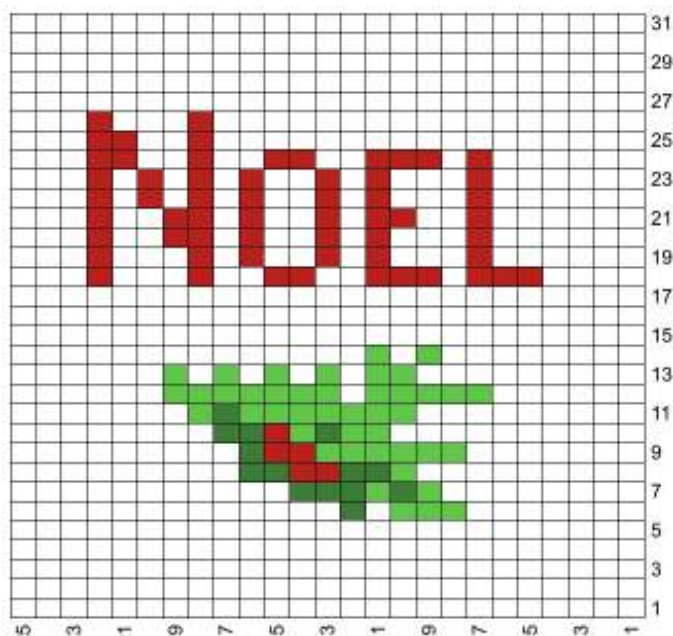
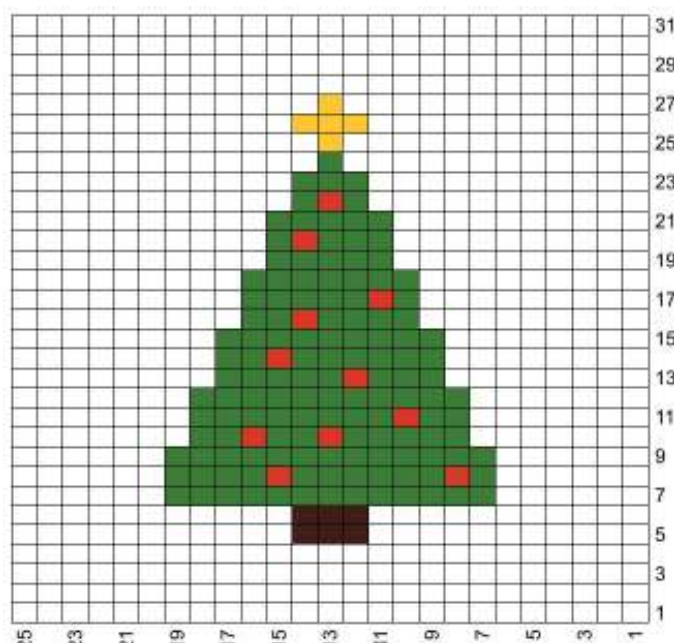
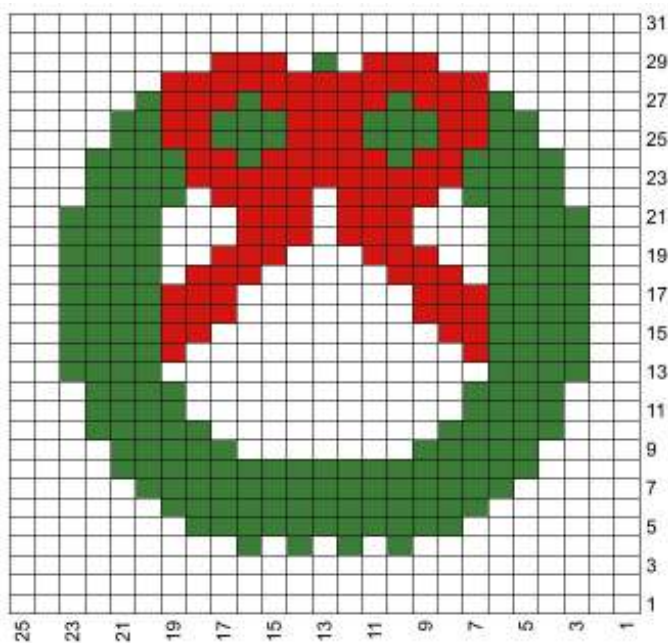


Edge: White

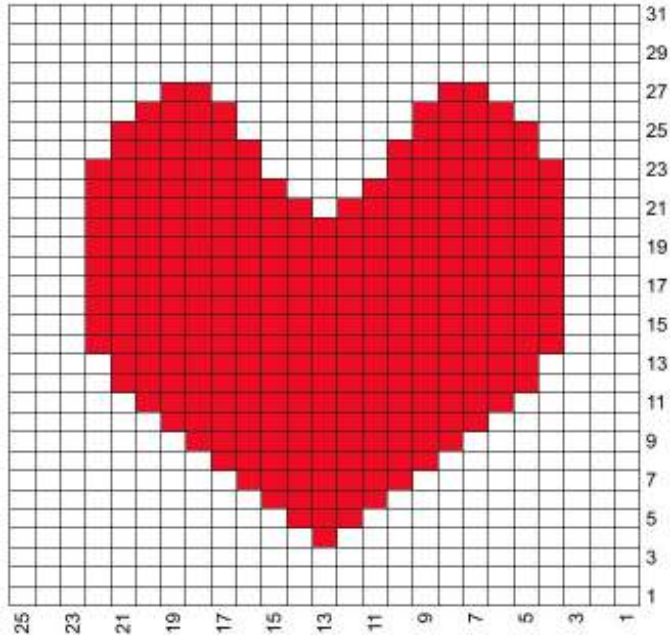
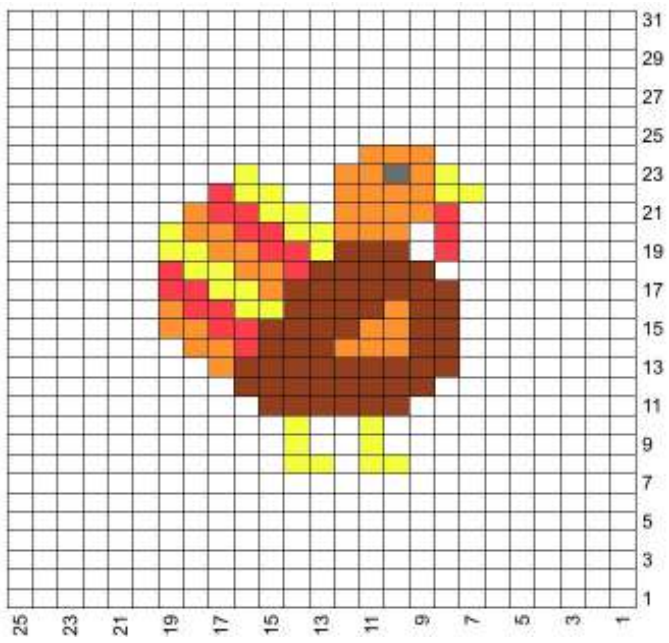
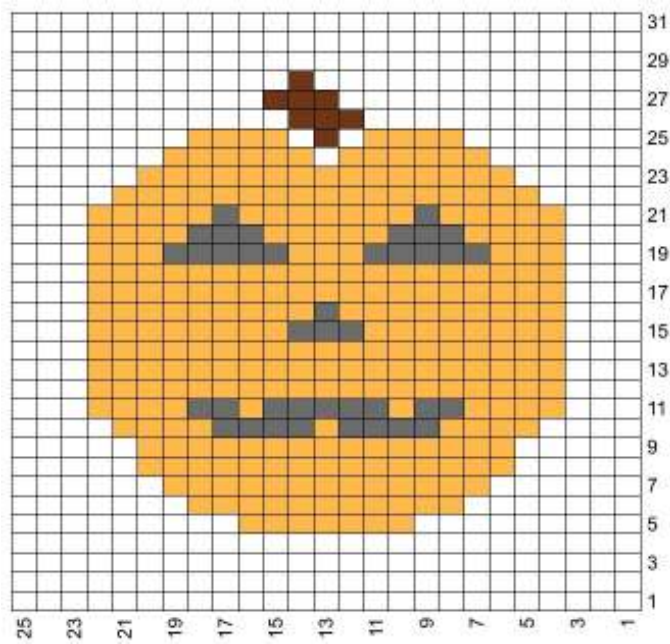
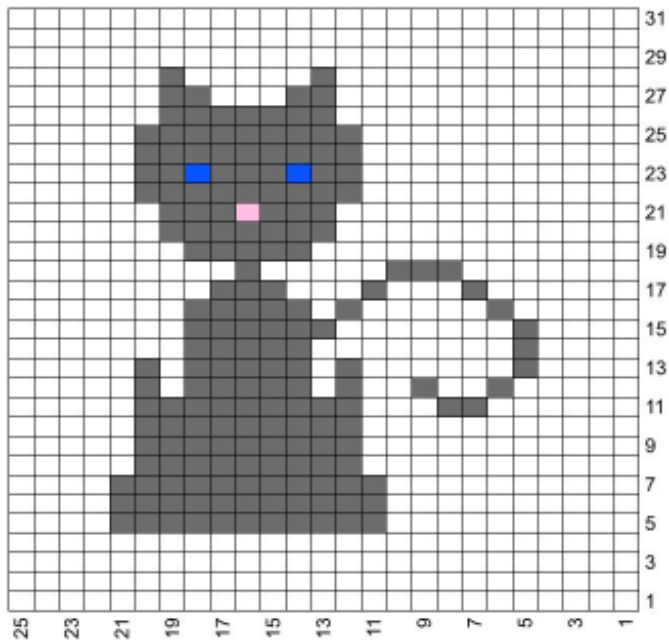


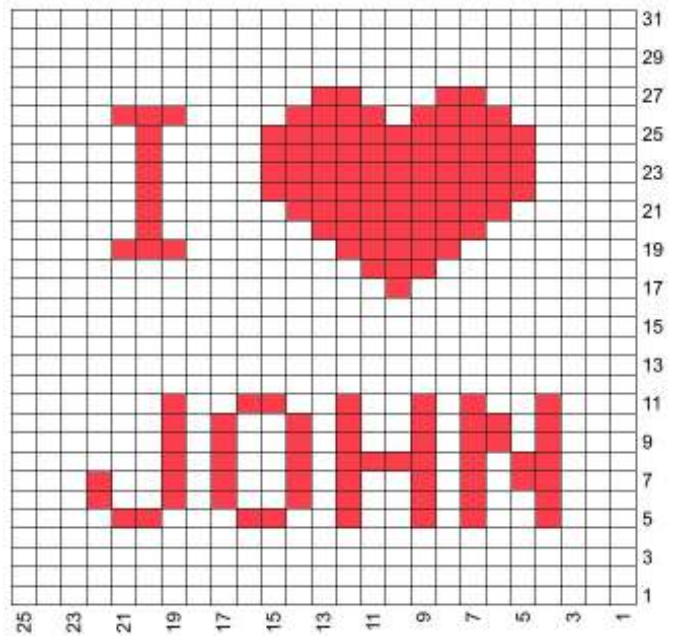
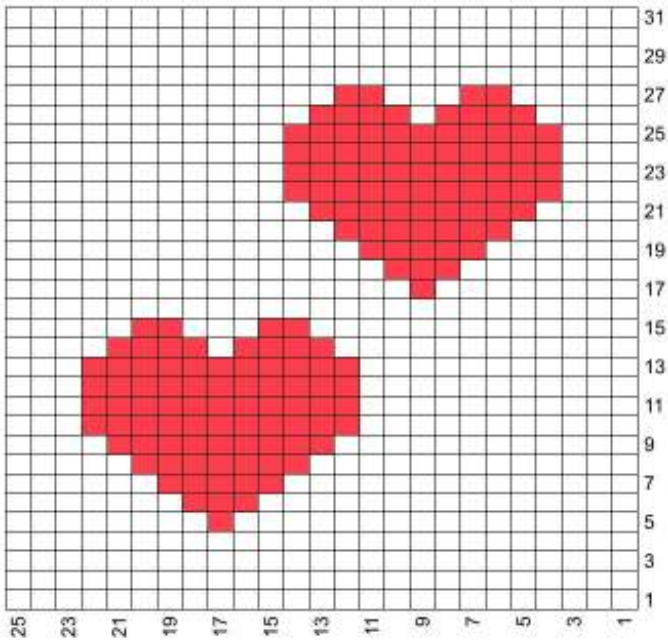
Edge: White

Holiday Coasters

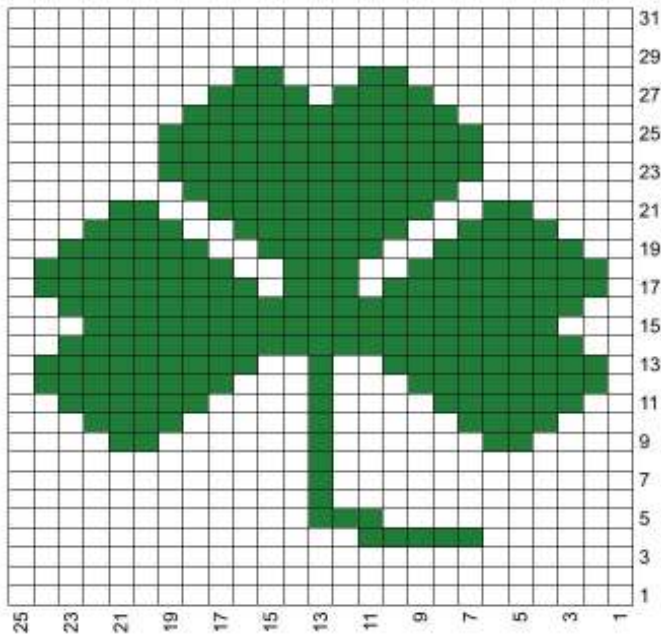


Duplicate stitch the word "Noel."



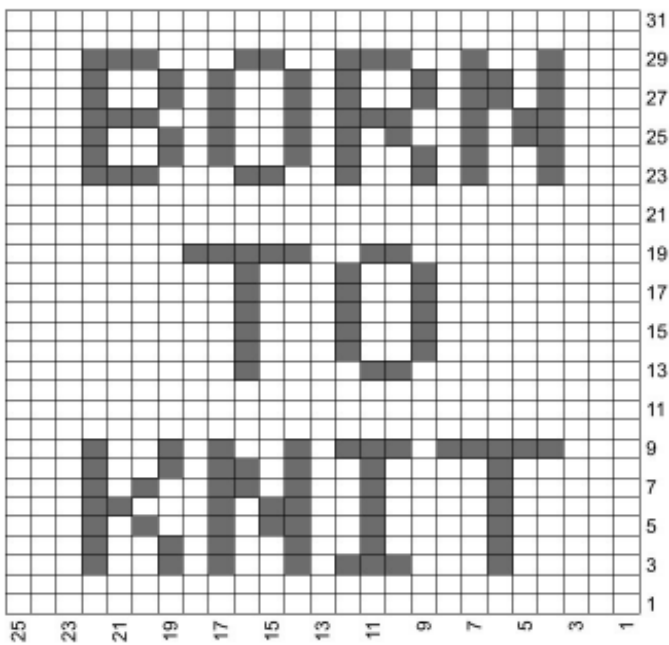


Using the blank graph one the last page, chart your desired name.

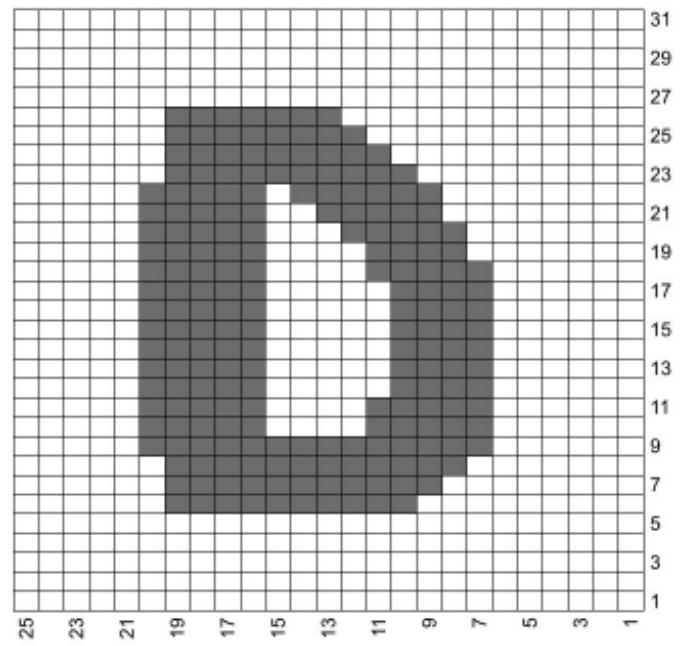
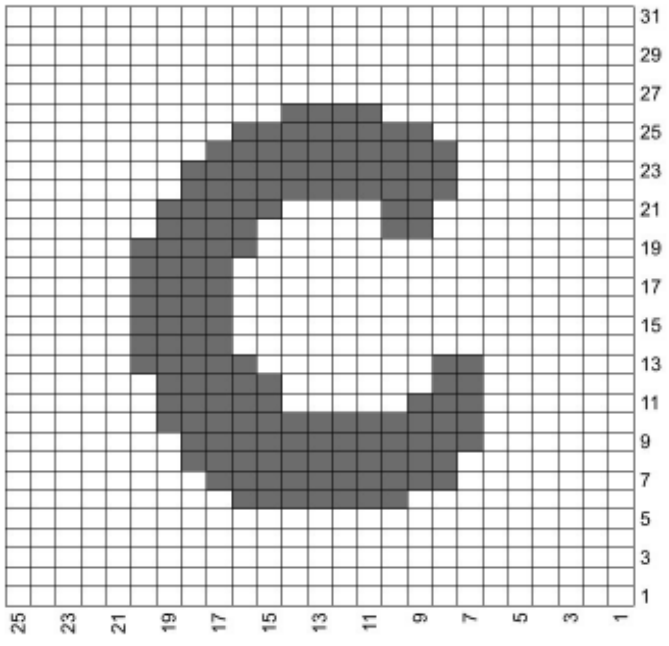
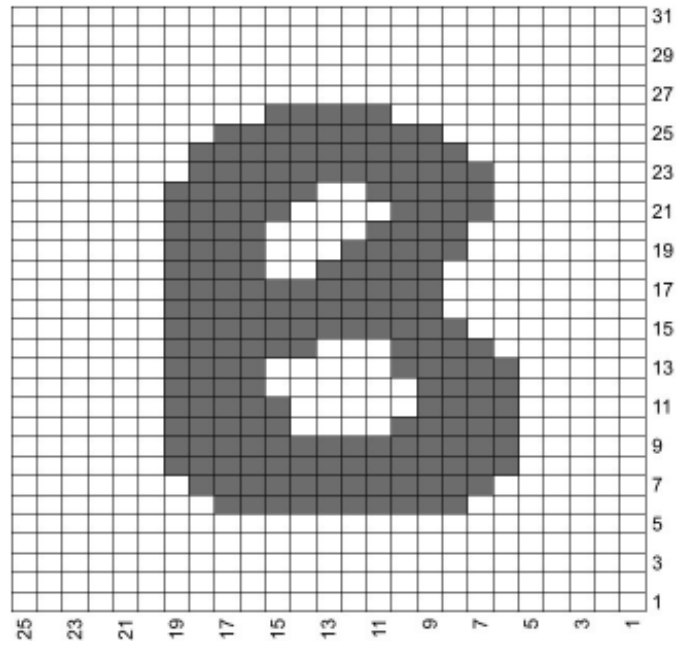
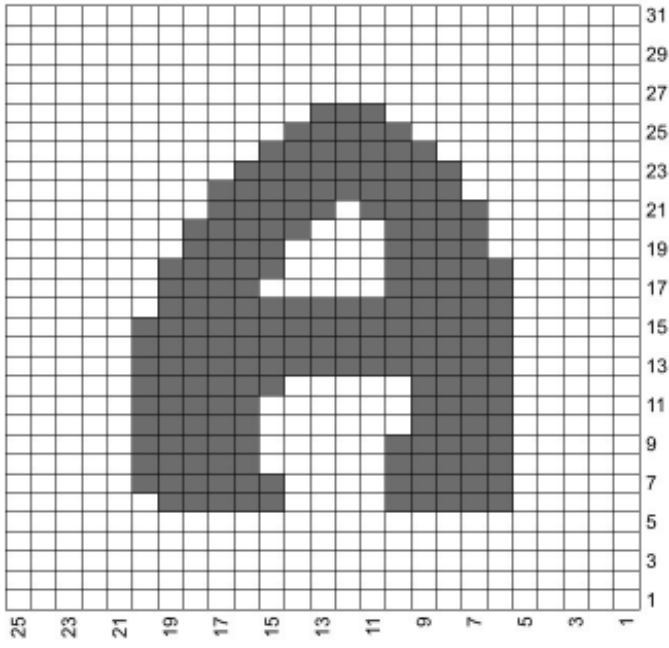


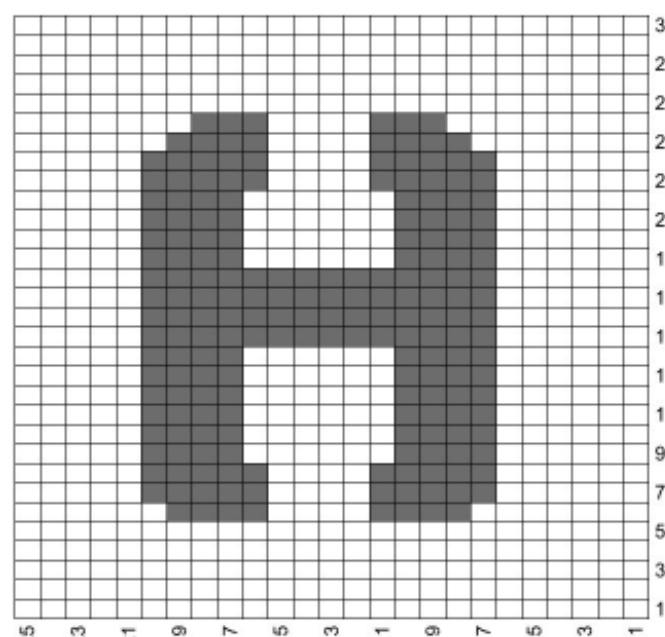
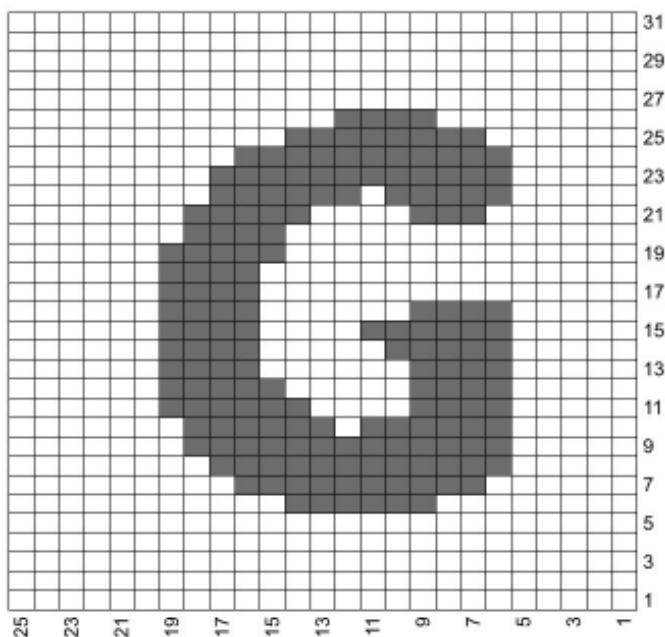
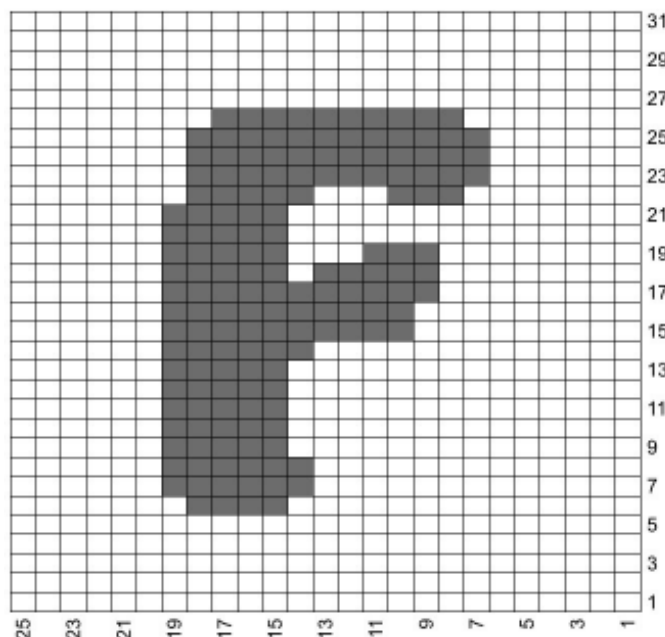
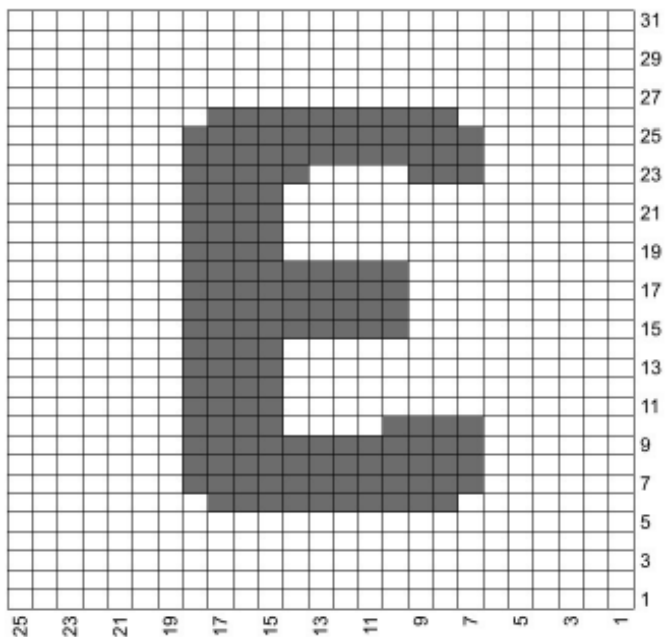
Note that this is 26 stitches wide, not 25.
Duplicate stitch the text.

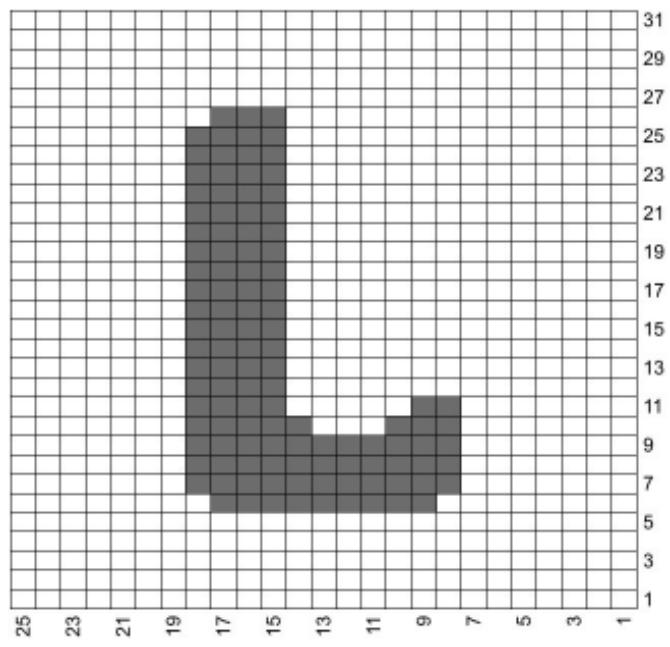
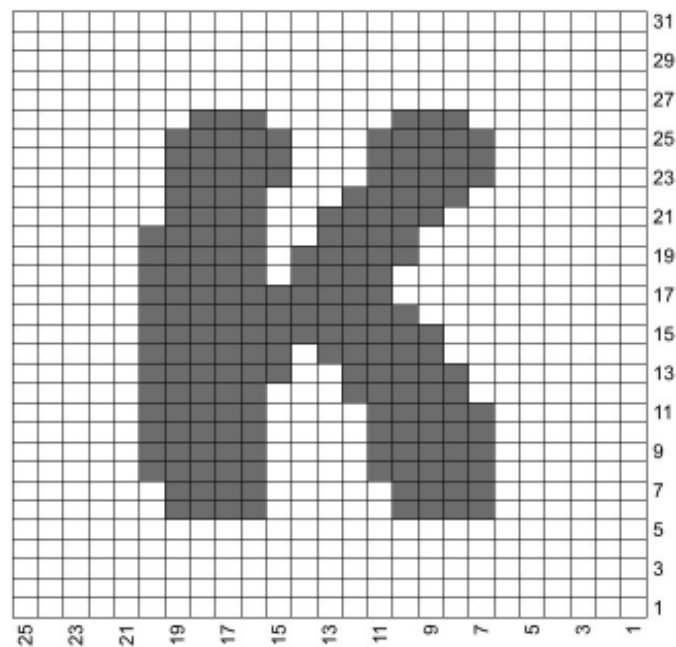
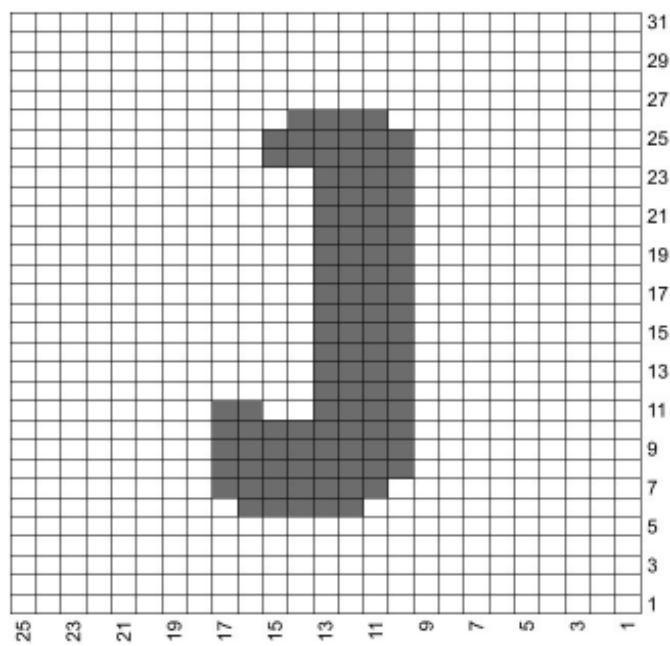
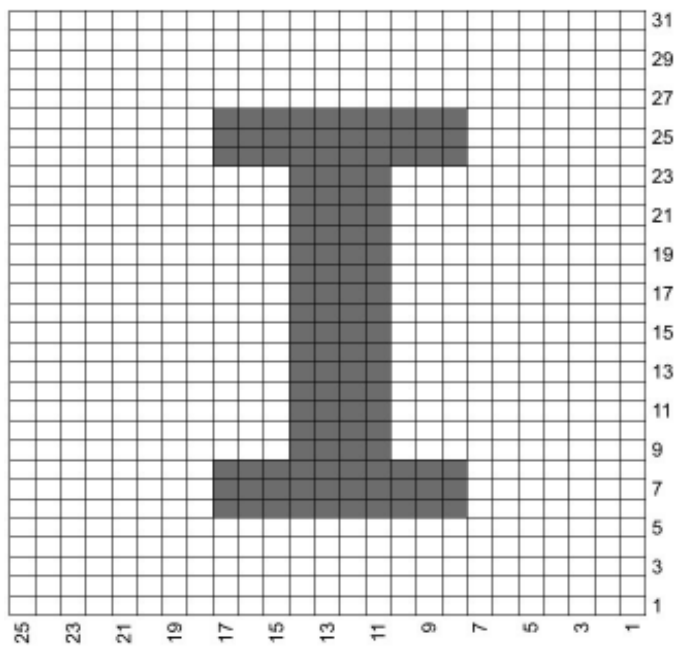
Miscellaneous

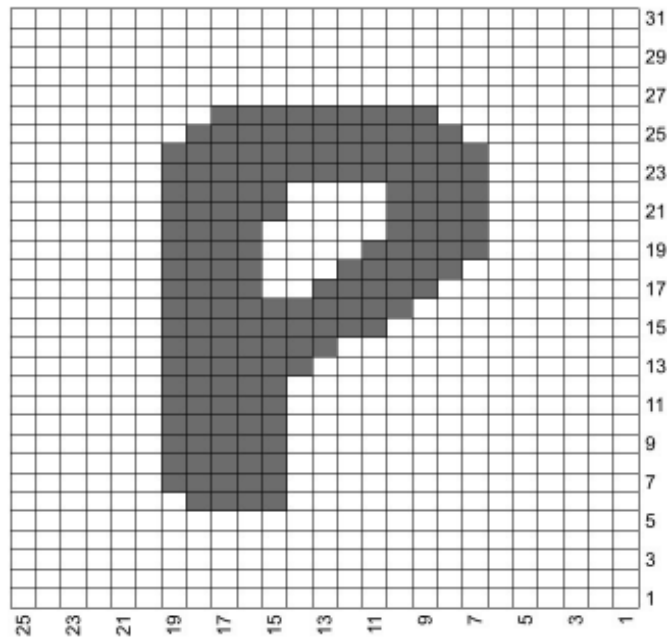
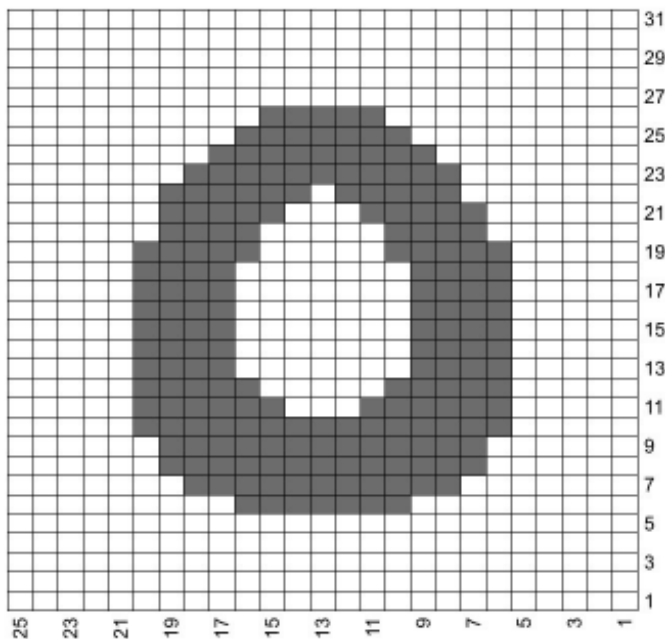
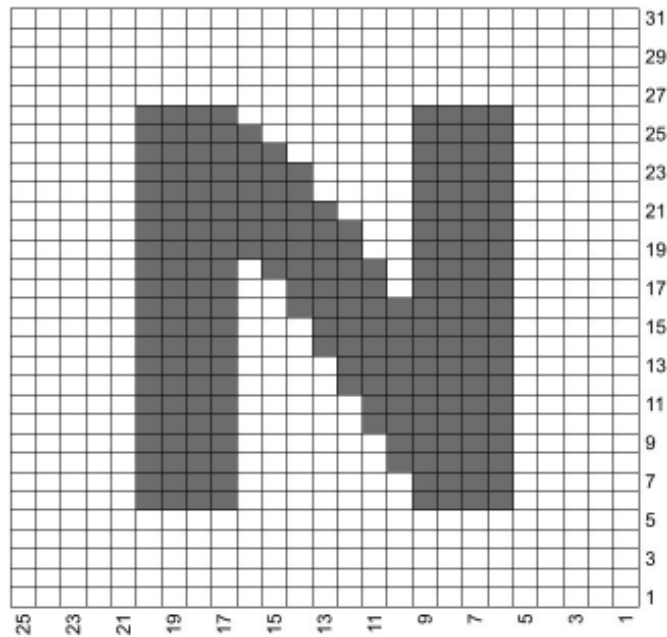
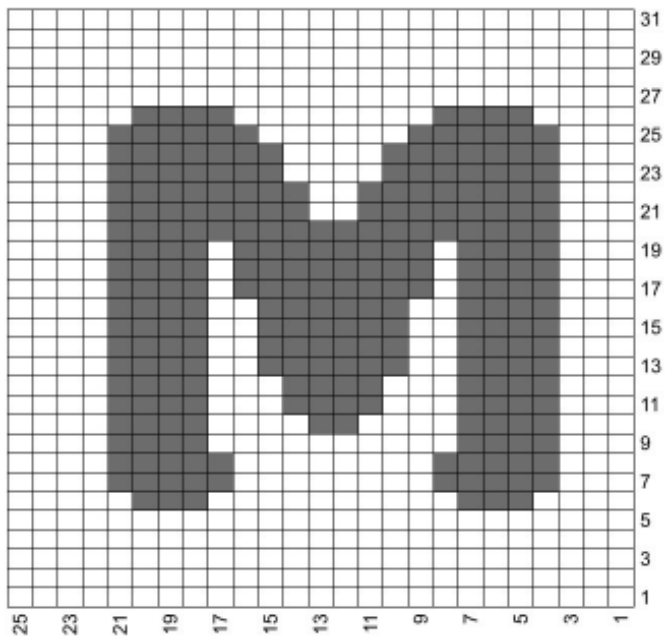


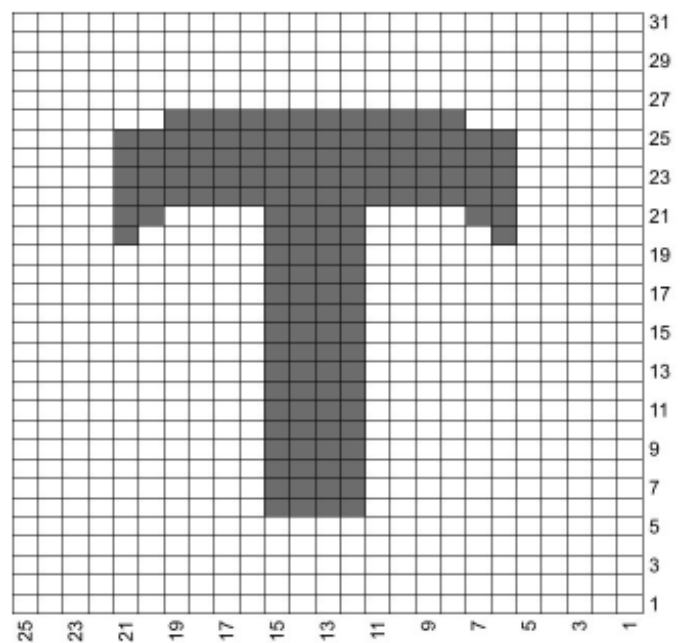
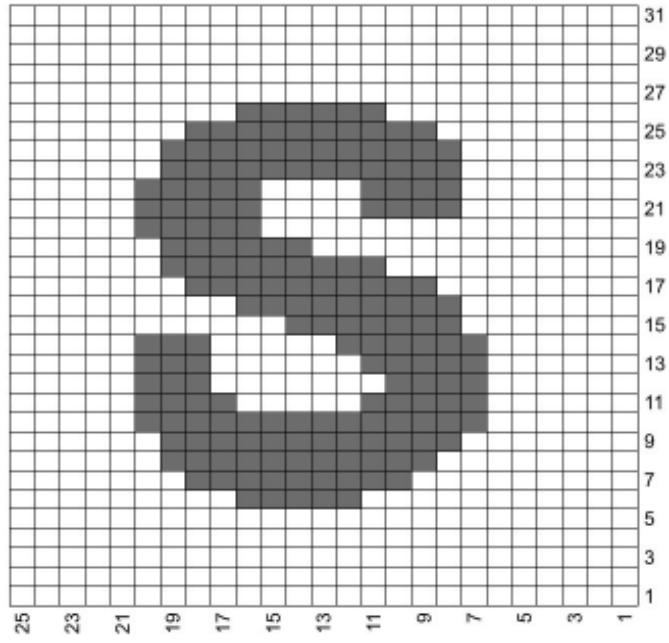
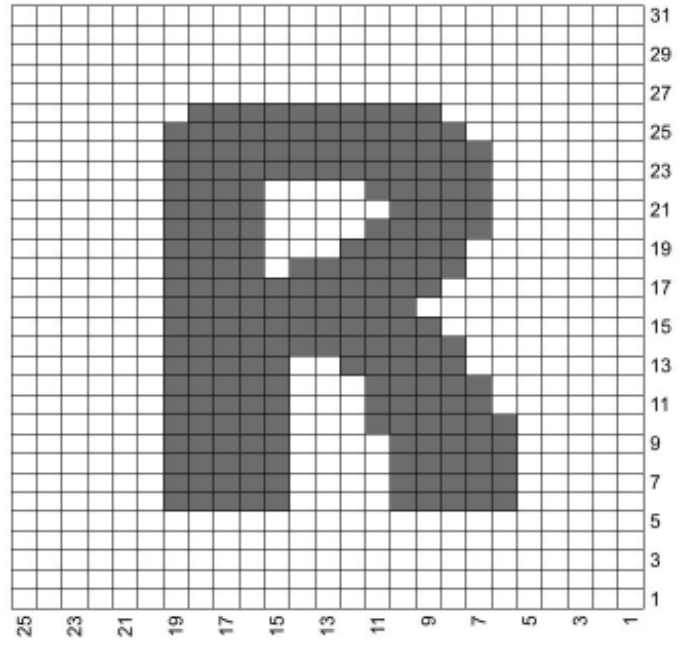
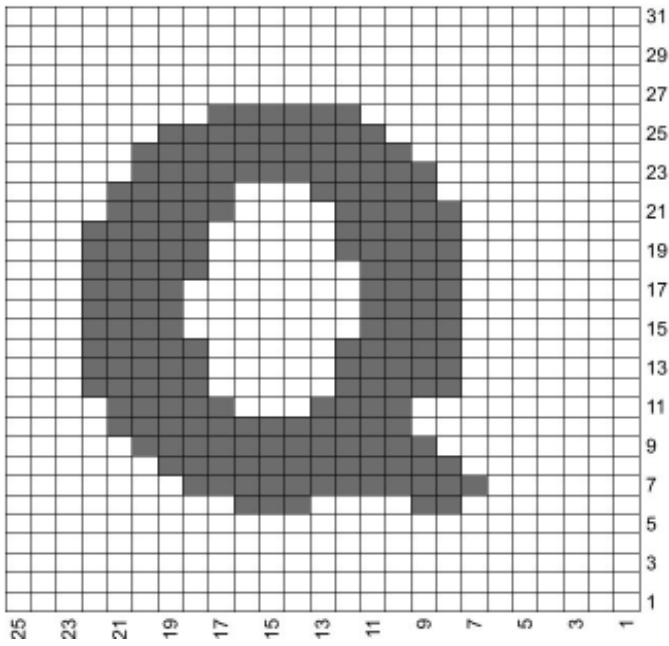
Duplicate stitch the words

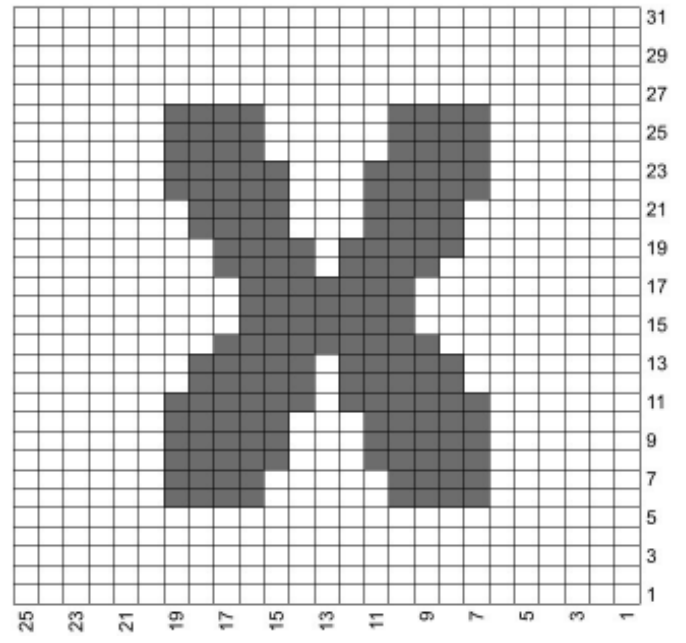
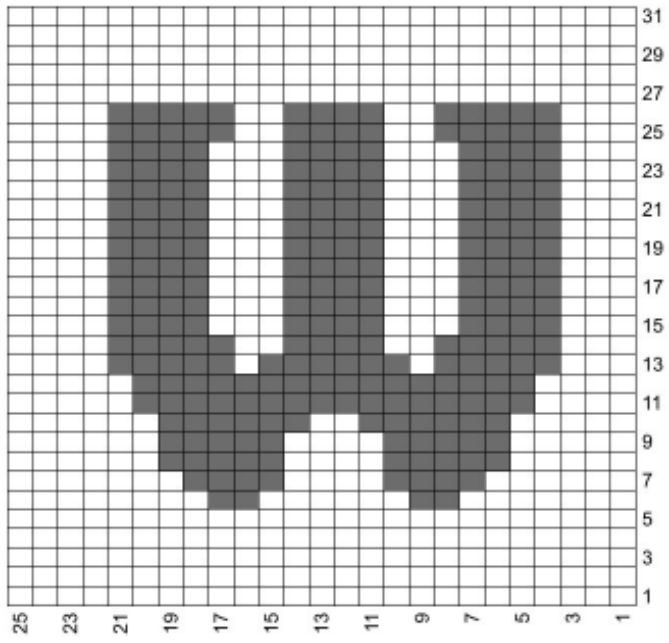
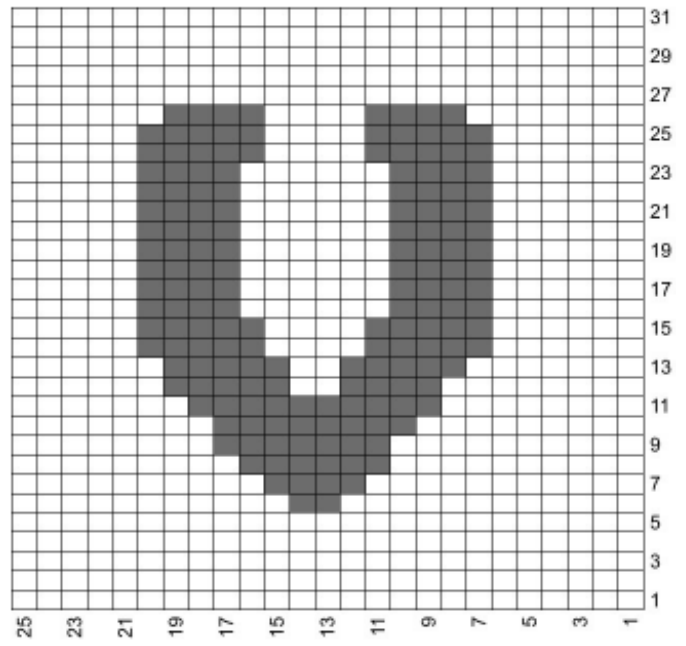
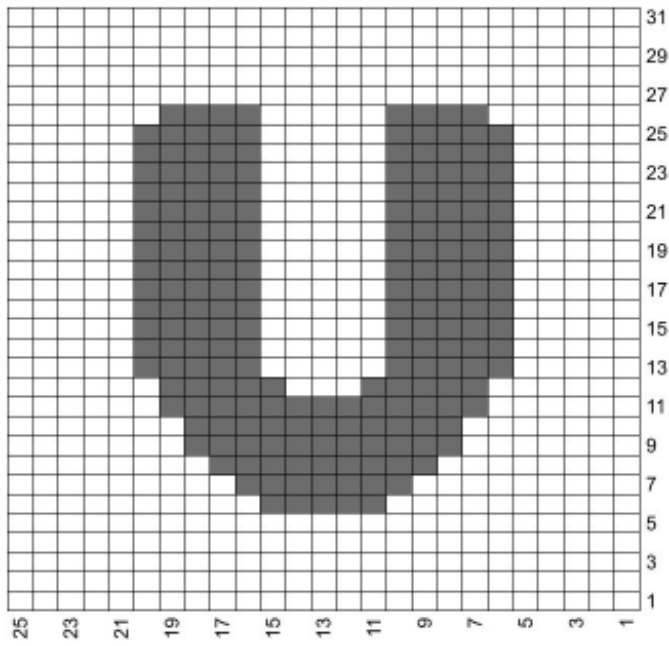


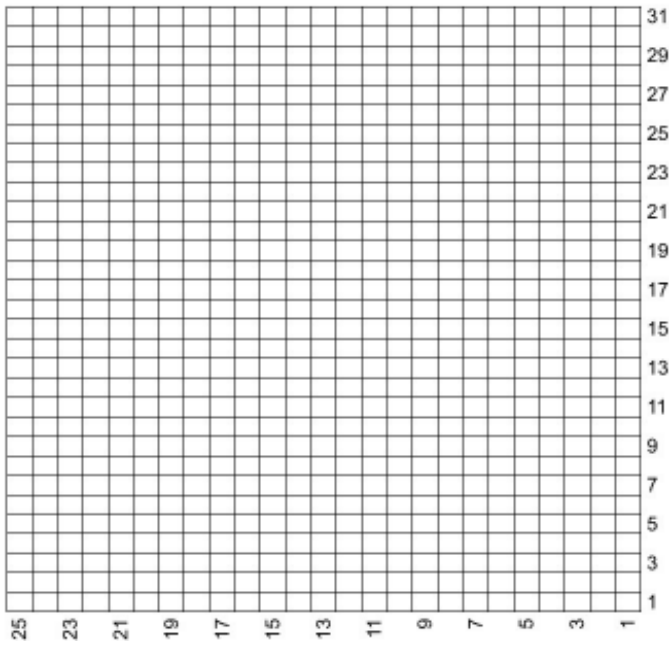
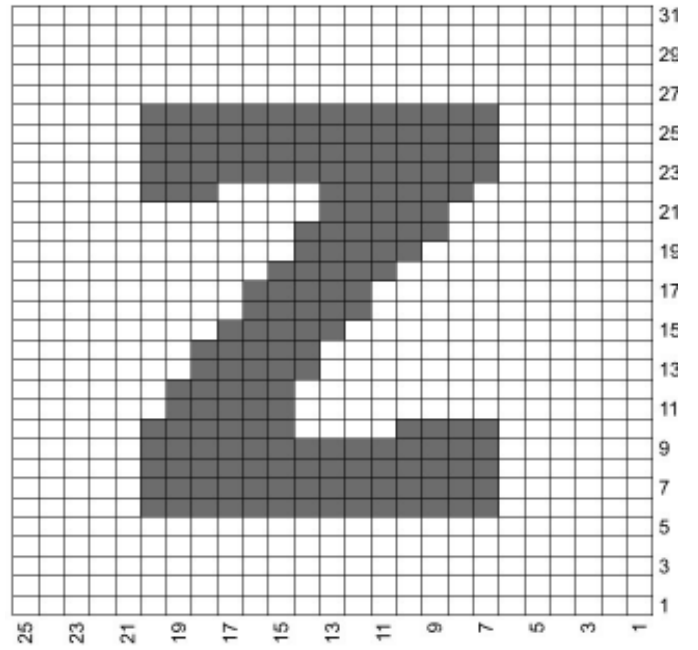
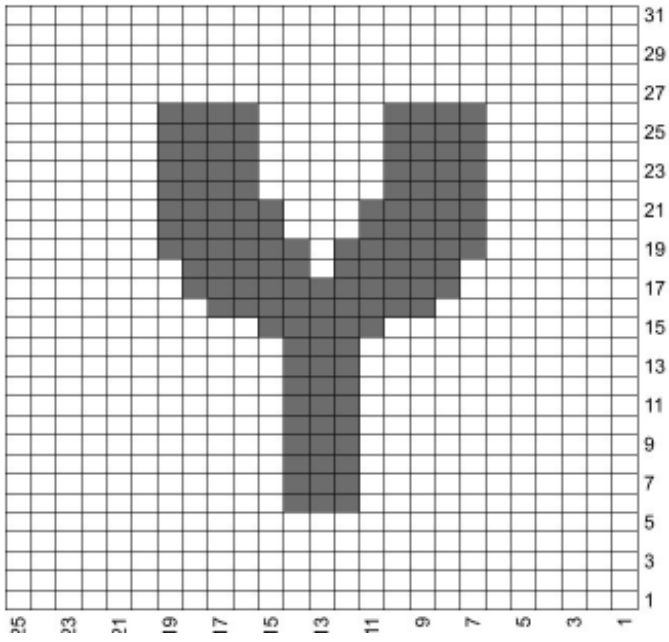












Finishing the border so that it looks seamless



Step 1



Step 2



Step 3



Step 4

Duplicate Stitch Tips

Use these tips to fully cover your stitches and neaten them.

- Always work vertical lines from bottom to top. Alternate the direction every other stitch, i.e. insert the needle under the V from left to right. On the next stitch, insert it from right to left.
- Always work diagonal lines from bottom to top and insert the needle under the V in the direction of the slant.
- When working a horizontal row, insert the needle in the same direction you are working. For example, if working from right to left, insert the needle under the V from right to left.